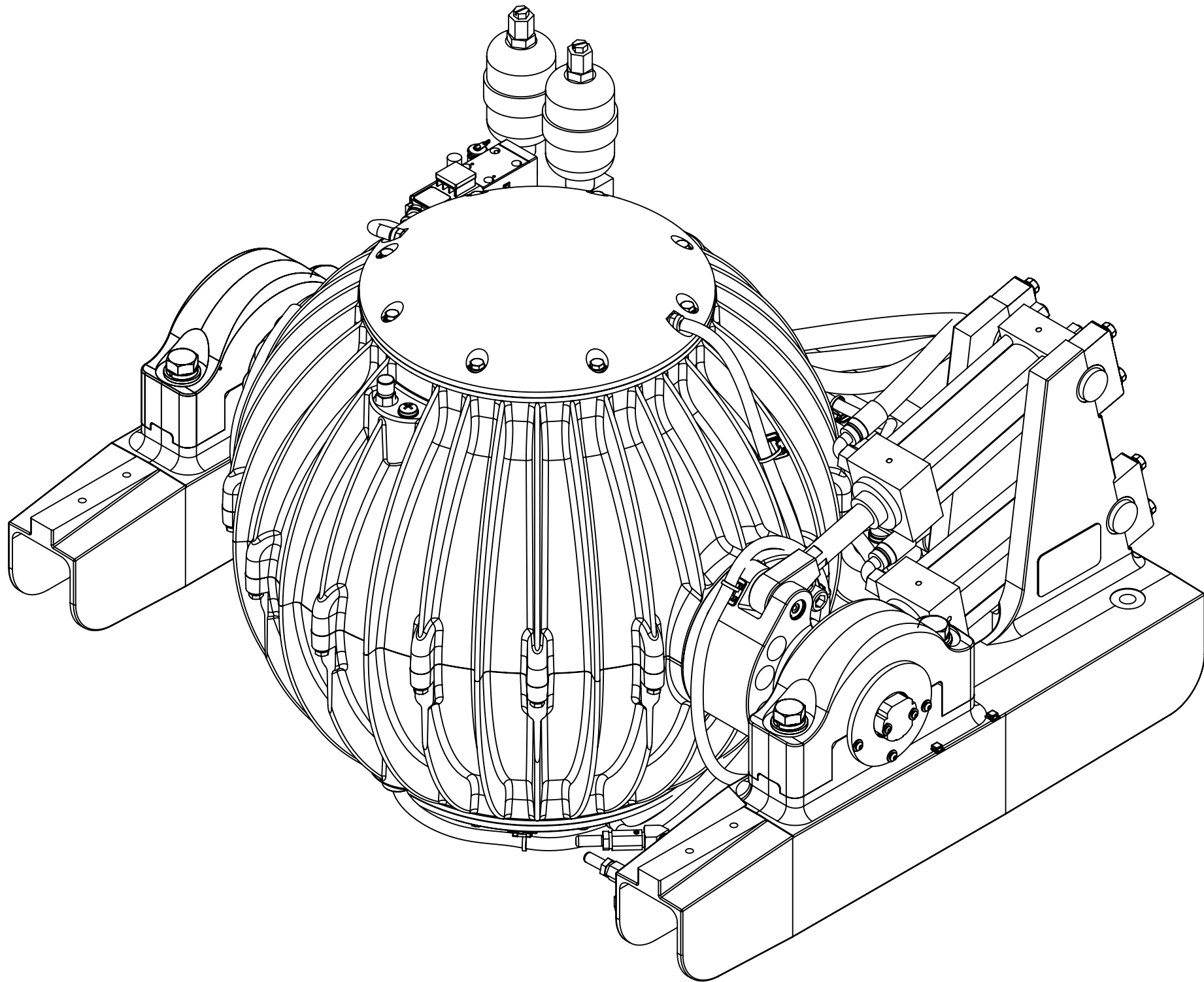


NOTES:

- 1) THIS DRAWING IDENTIFIES THE MAJOR COMPONENTS FOR THE MODEL 7000 GYRO.
- 2) ITEM 5, FORWARD BRACE, MUST BE IN PLACE WHEN INSTALLING GYRO INTO VESSEL TO MAINTAIN ALIGNMENT OF FOUNDATION. BRACE CAN BE REMOVED ONLY AFTER ADHESIVE THAT BONDS GYRO FOUNDATION TO HULL STRUCTURE HAS CURED.
- 3) GYRO IS SHIPPED WITH ITEM 23, LIFTING EYES (2), INSTALLED IN ENCLOSURE. ITEMS 24 & 25 WILL SHIP LOOSE AND WILL BE INSTALLED IN GYRO AFTER INSTALLATION IN VESSEL IS COMPLETE.



REVISIONS				
REV.	ZONE	DESCRIPTION	DATE	APPROVED
2		1. CHANGED ITEM 4 PART NO. FROM 10323 TO 10343. 2. CHANGED ITEM 5 PART NO. FROM 10323 TO 10334. 3. CHANGED ITEM 18 PART NO. FROM 40014 TO 40101.	11AUG08	BHS

30	40004	VACUUM VALVE	1	
29	60008	FLAT WASHER	4	
28	60007	SPRING LOCK WASHER	4	
27	10319	HEX HEAD CAP SCREW	4	
26	20043	GIMBAL ANGLE SENSOR / CABLE ASSEMBLY	1	
25	60060	PAN HEAD MACHINE SCREW	2	
24	40068	SEALING WASHER	2	
23	60013	EYEBOLT	2	SEE NOTE 3
22	50023	HOSE ASSEMBLY, PORT #4 TO UPPER CYL. CAP	1	
21	50022	HOSE ASSEMBLY, PORT #1 TO LOWER CYL. CAP	1	
20	50021	HOSE ASSEMBLY, PORT #2 TO LOWER CYL. HEAD	1	
19	50020	HOSE ASSEMBLY, PORT #3 TO UPPER CYL. HEAD	1	
18	40101	RETAINING RING	2	
17	60012	PIN RETAINING WASHER	2	
16	10306	BRAKE CRANK PIN	2	
15	10304	BRAKE CRANK BUSHING	4	
14	10307	ROD-END BUSHING	4	
13	10297	BRAKE CYLINDER ROD-END	2	
12	10308	FLANGED TRUNNION BUSHING	4	
11	50002	BRAKE CYLINDER (UPPER)	1	
10	50001	BRAKE CYLINDER (LOWER)	1	
9	10324	PRECESSION BRAKE MANIFOLD ASSEMBLY	1	
8	20046	FRESH WATER CIRCULATION PUMP / CABLE ASSEMBLY	1	
7	10336	FRESH WATER COOLING CIRCUIT SERVICE PORT SUB-ASSEMBLY	1	
6	10335	HEAT EXCHANGER SUB-ASSEMBLY	1	
5	10334	FOUNDATION FORWARD BRACE (TEMPORARY)	1	SEE NOTE 2
4	10343	FOUNDATION AFT BRACE	1	
3	10268	FOUNDATION SADDLE ASSEMBLY	1	
2	10266	BRAKE FOUNDATION SADDLE ASSEMBLY	1	
1	10338	ENCLOSURE-GIMBAL SHAFT SUB-ASSEMBLY	1	
ITEM NO.	PART NO.	DESCRIPTION	QTY	NOTE

THIRD ANGLE PROJECTION

PROPRIETARY AND CONFIDENTIAL

THE INFORMATION CONTAINED IN THIS DRAWING IS THE SOLE PROPERTY OF SEAKEEPER, INC. ANY REPRODUCTION IN PART OR AS A WHOLE WITHOUT THE WRITTEN PERMISSION OF SEAKEEPER, INC. IS PROHIBITED.

UNLESS OTHERWISE SPECIFIED:  
DIMENSIONS ARE IN INCHES  
TOLERANCES:  
-TWO PLACE DECIMAL ±0.01  
-THREE PLACE DECIMAL ±.005  
-ALL DIAMETERS RUNOUT TO DATUM SURFACES .005 MAX  
-ALL FACES PERPENDICULAR TO DATUM SURFACES .005 MAX  
-ALL EDGE BREAKS .010-.020 X 45°  
-ALL FILLET RADII .010-.020  
-SURFACE FINISH

DRAWN  
CHECKED  
QNTY APPR.  
ENG APPR.

NAME  
BHS

DATE  
16MAY08

COMMENTS:

DO NOT SCALE DRAWING

P.O. BOX 999  
SOLOMONS, MARYLAND 20688, USA  
PHONE: (410) 326-1590 FAX: (410) 326-1199

TITLE:  
  
MODEL 7000 GYRO  
ASSEMBLY & PARTS LIST

SIZE  
C

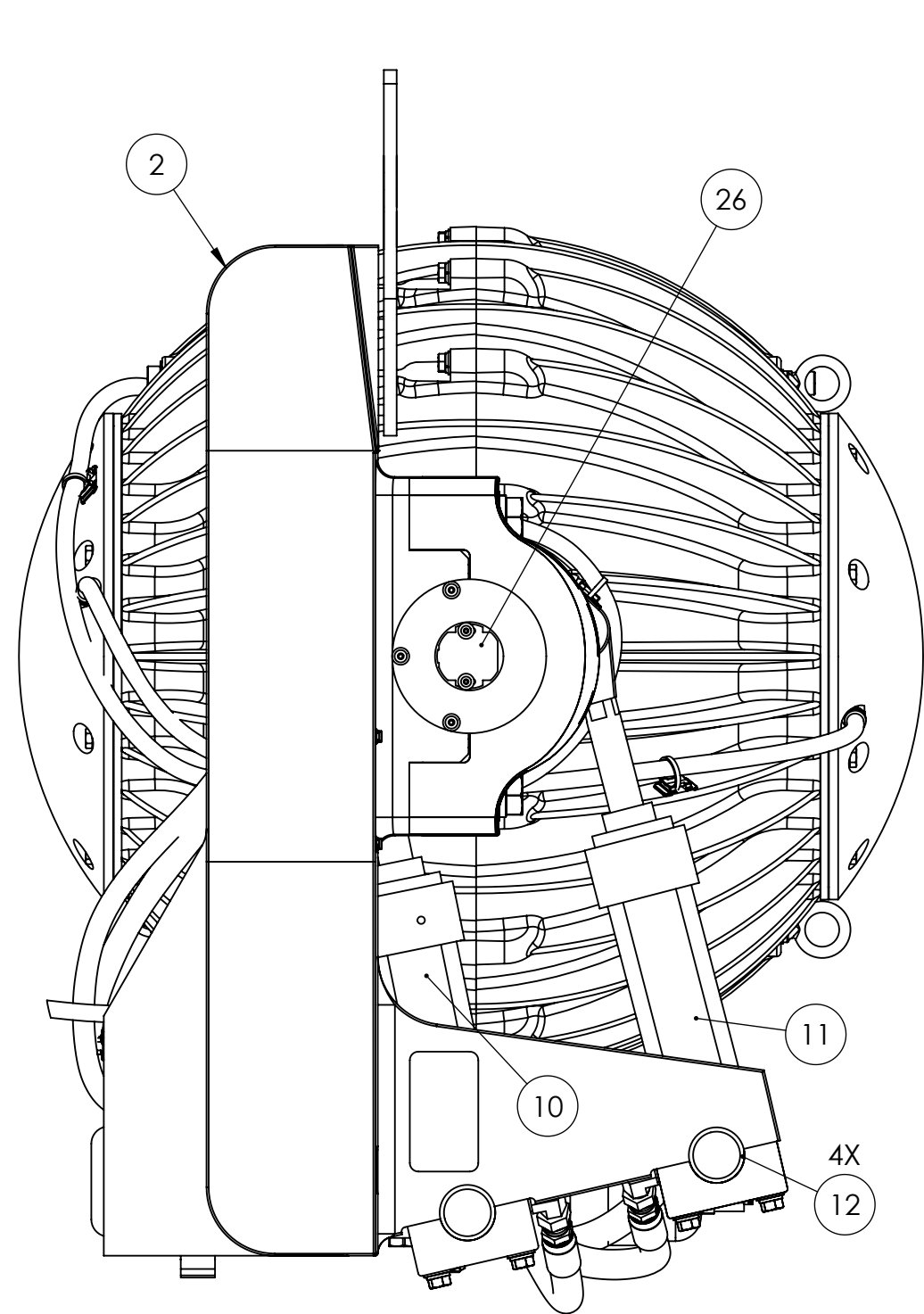
DWG. NO.  
90004

REV  
2

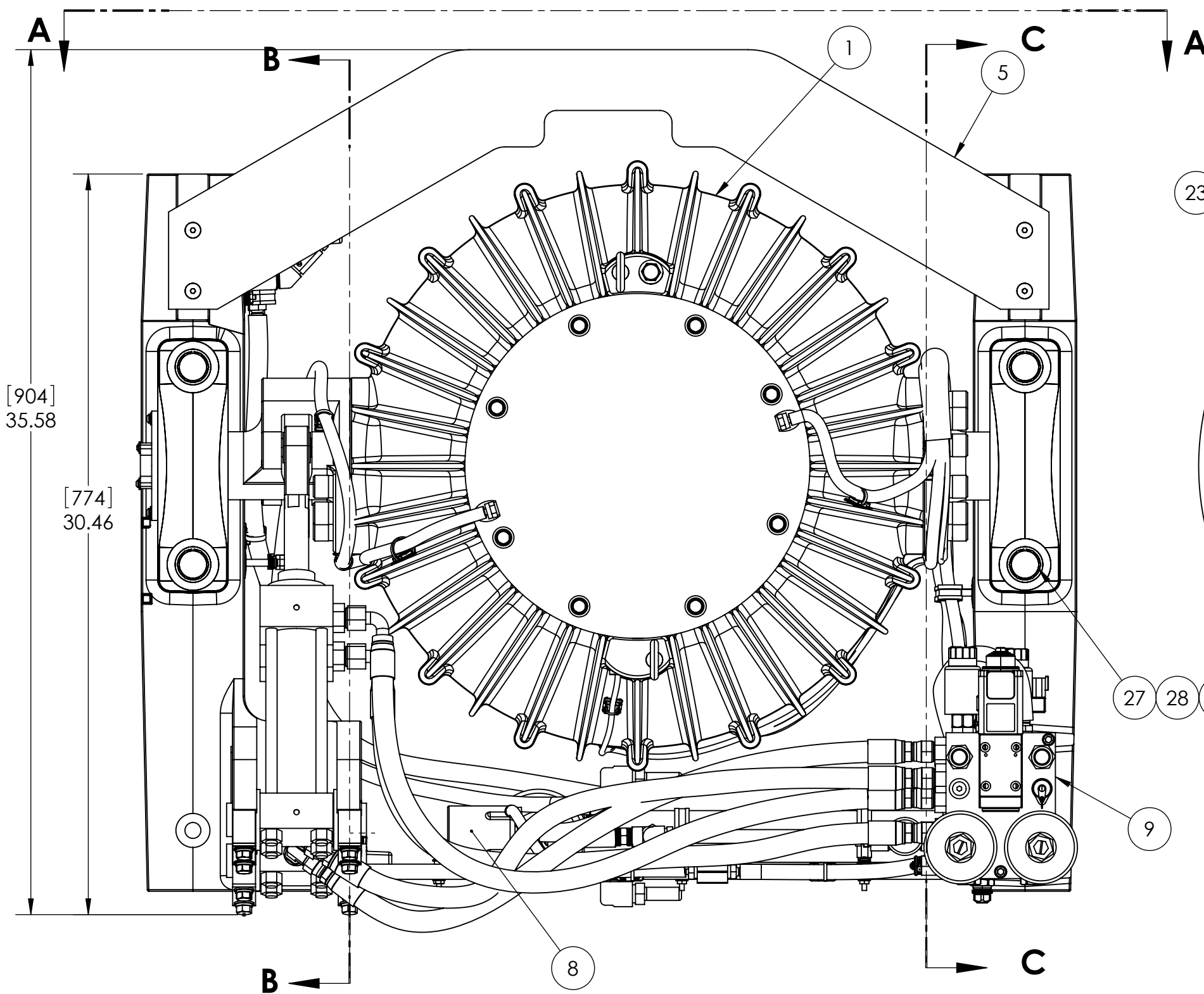
SCALE: 1:10

WEIGHT:

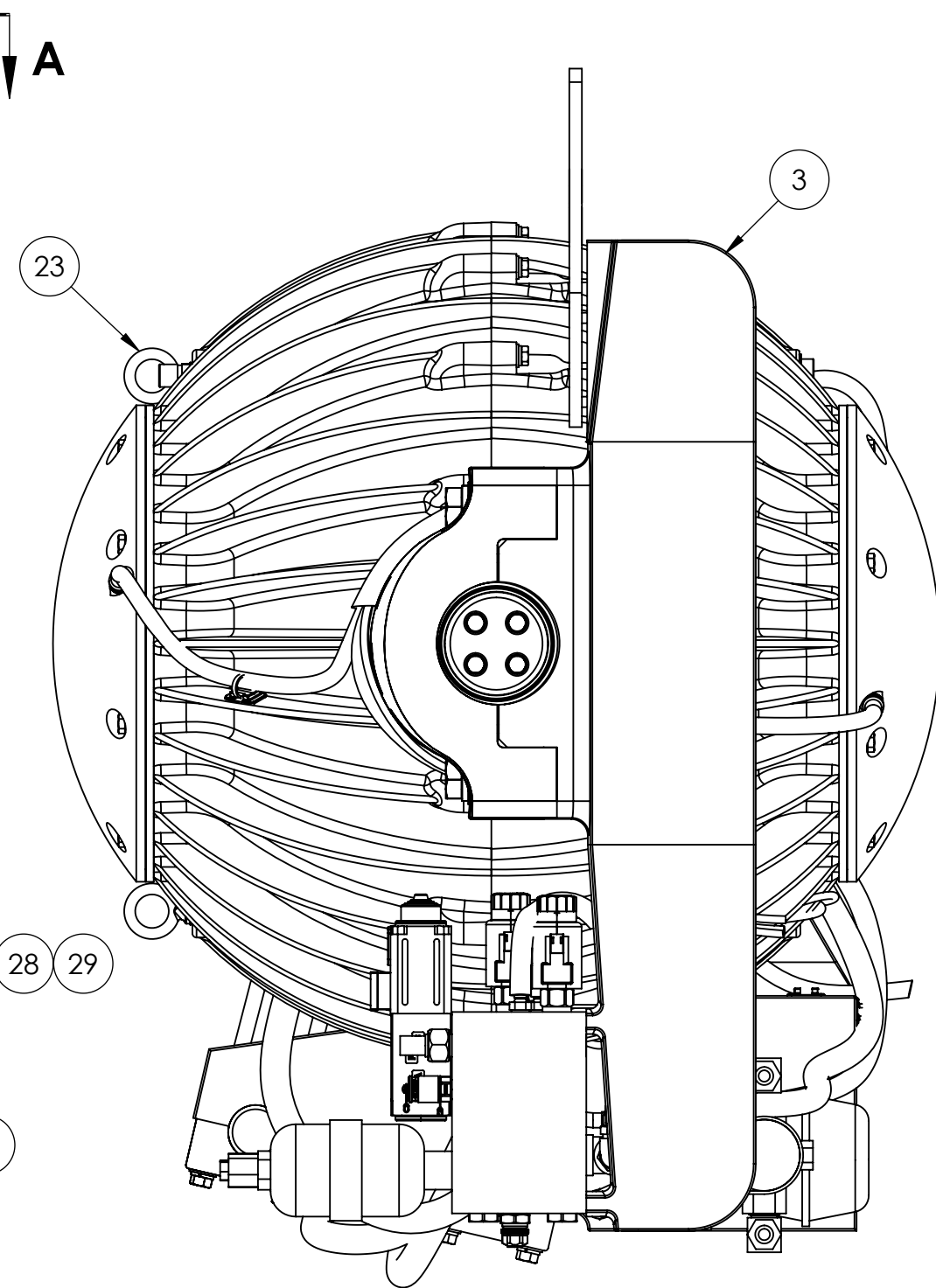
SHEET 1 OF 3



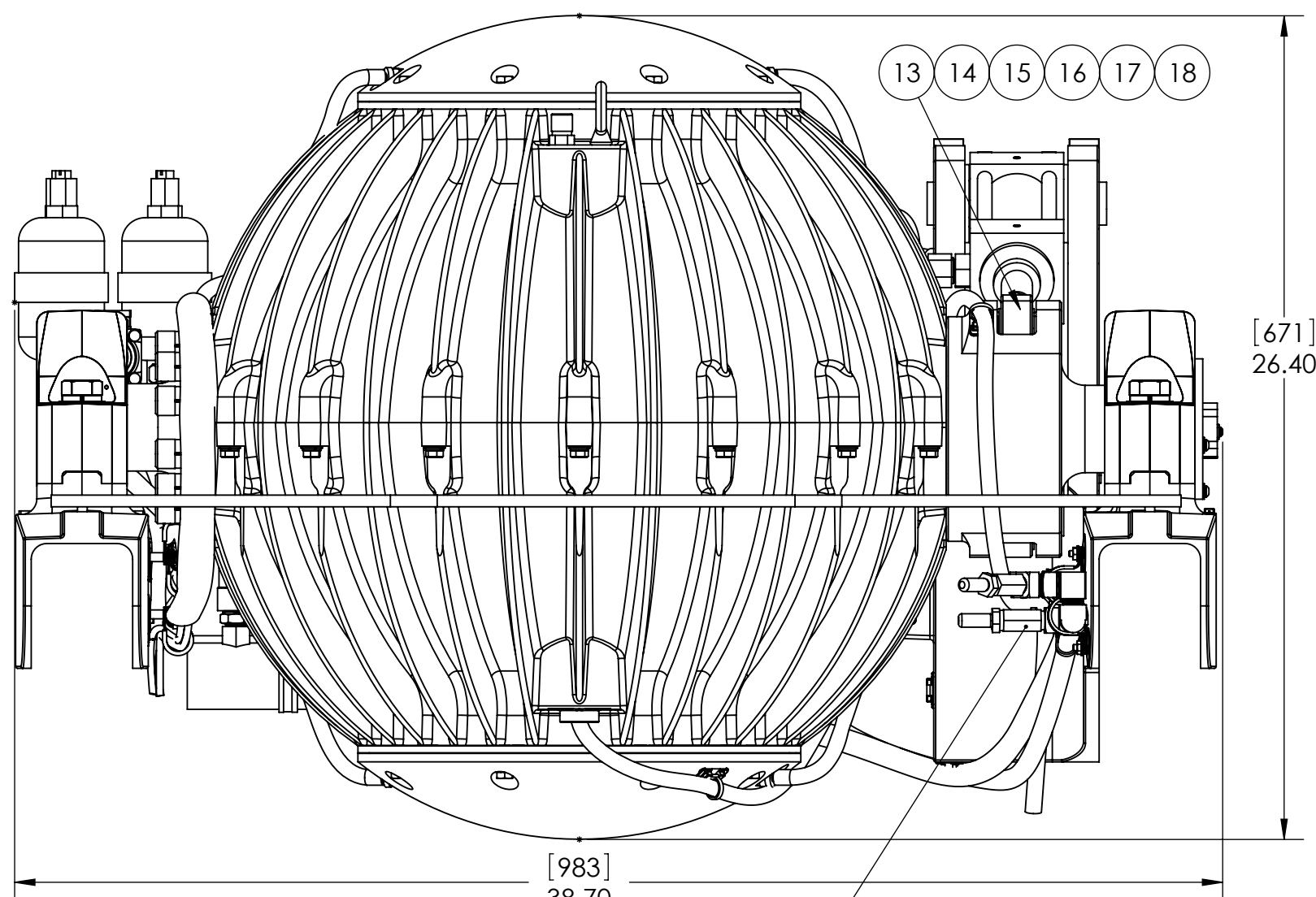
**PORT SIDE VIEW**



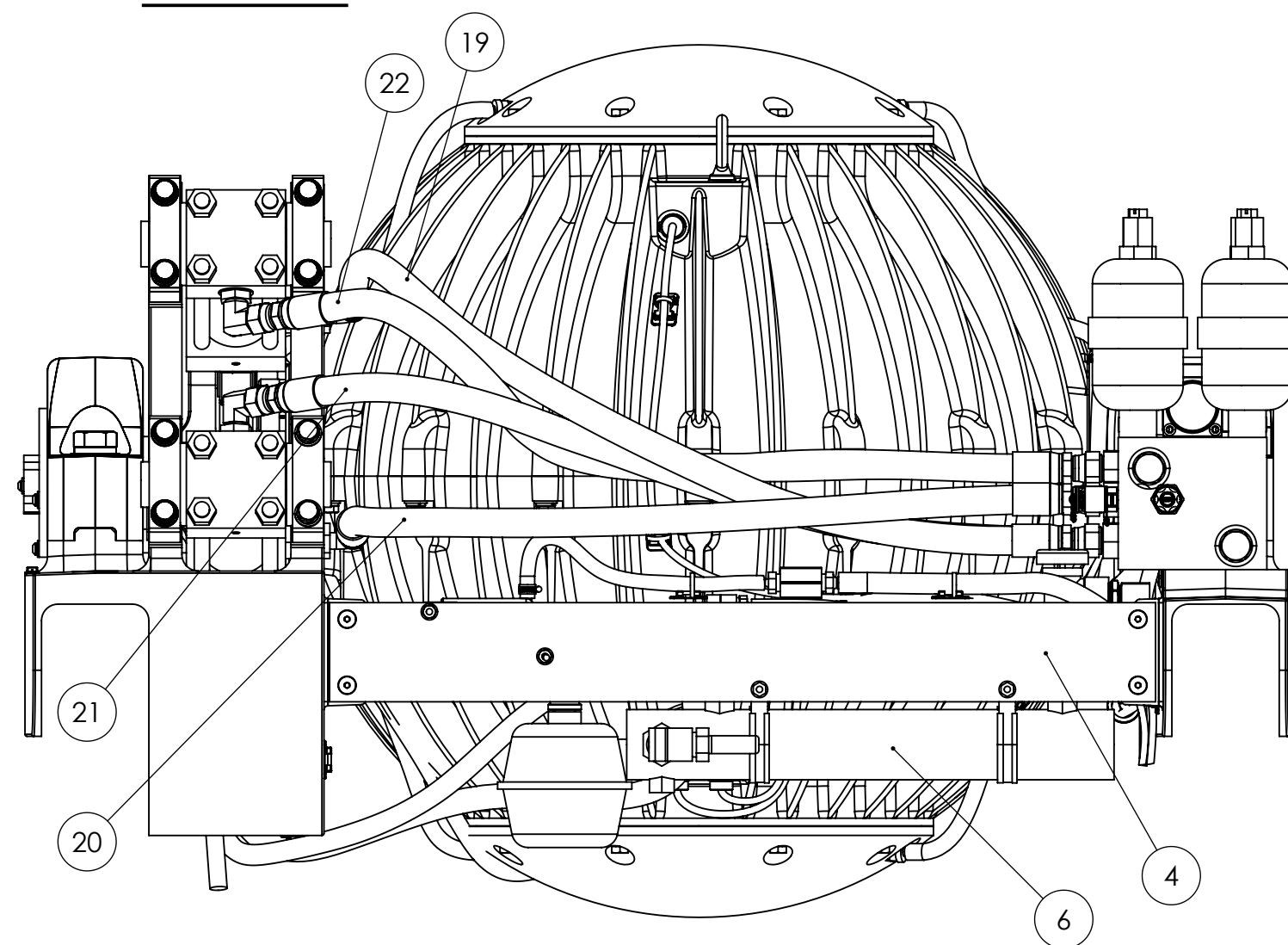
**TOP VIEW**



**STARBOARD SIDE VIEW**

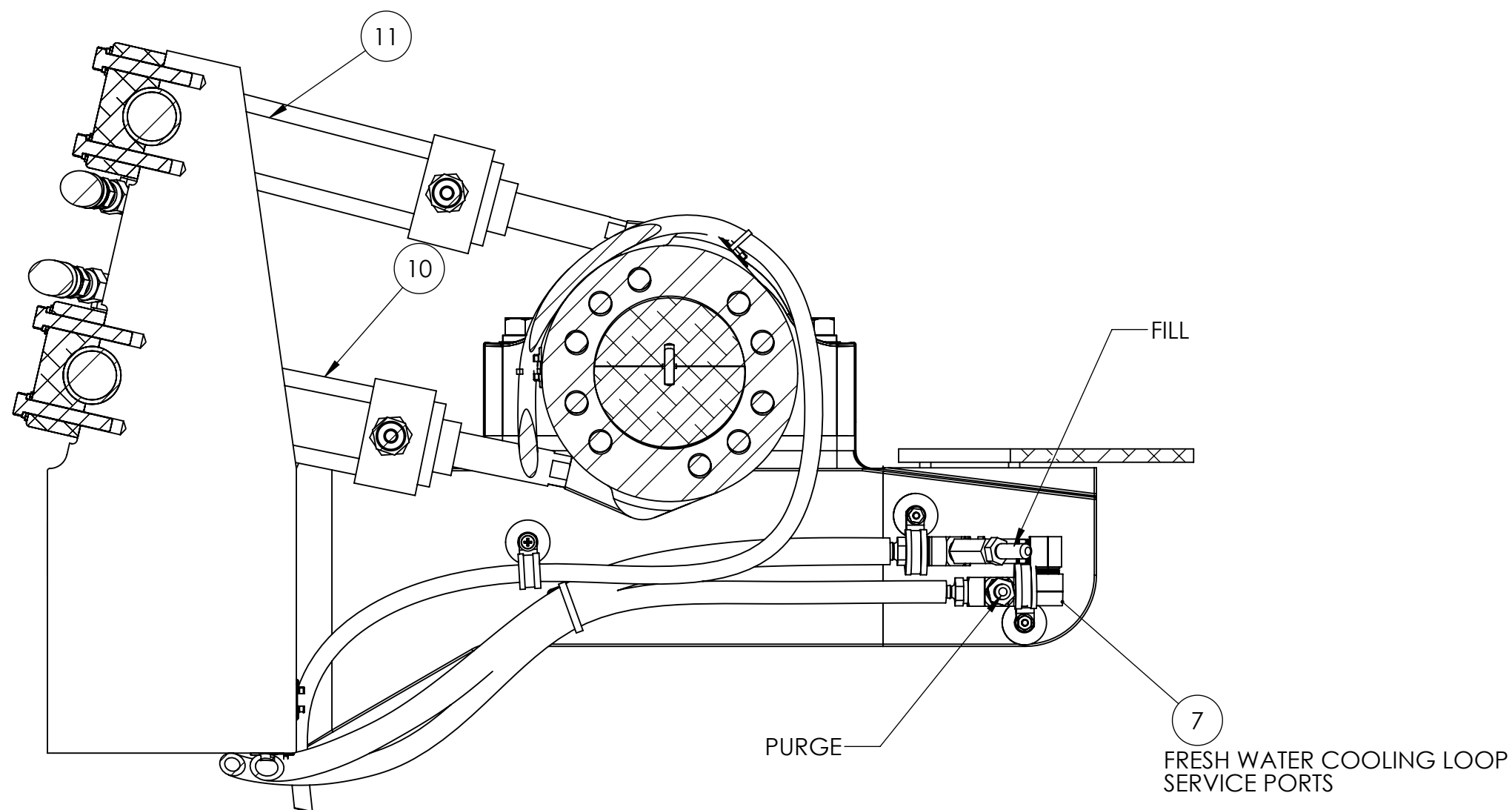


**FRONT VIEW**

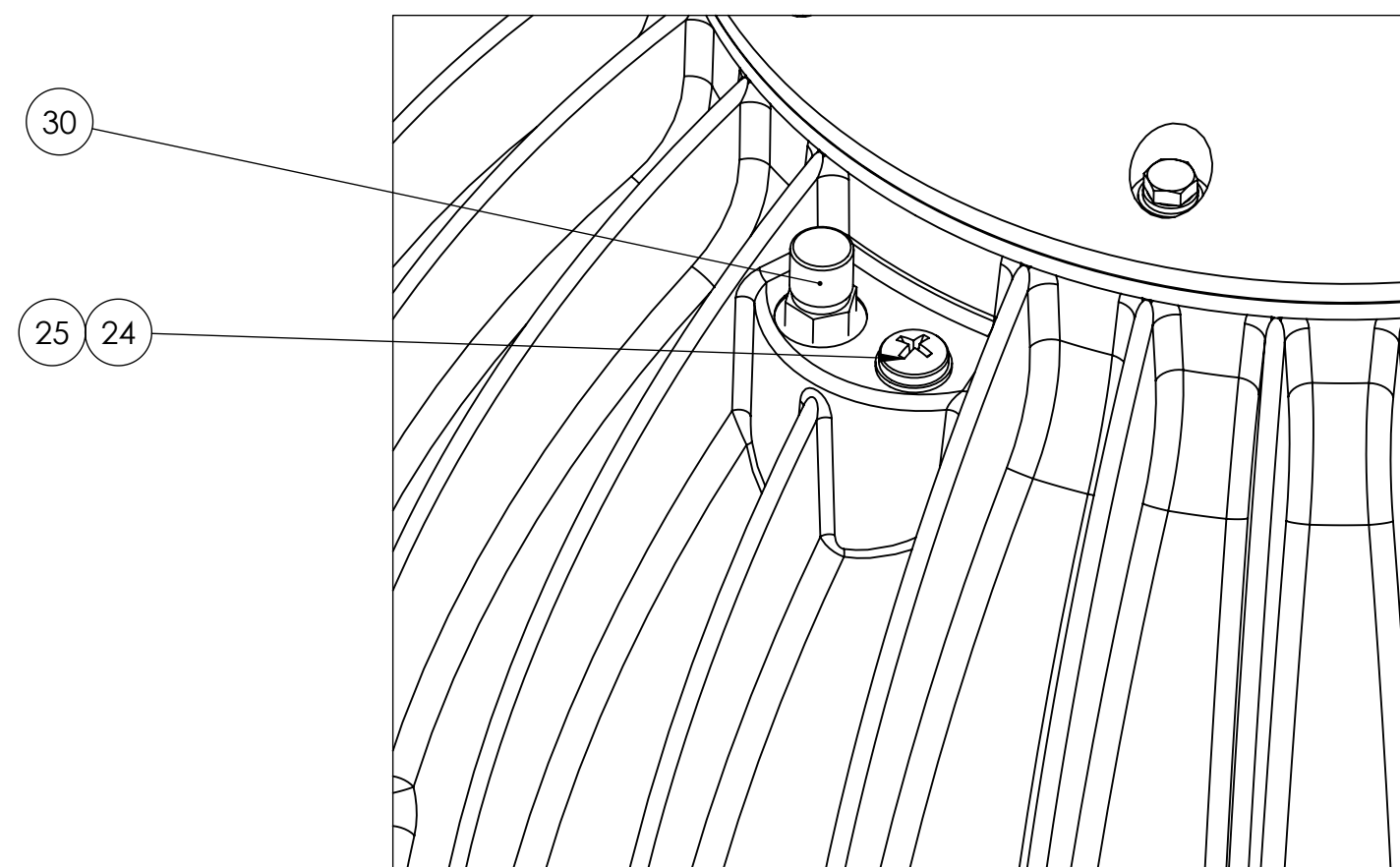


**AFT VIEW**

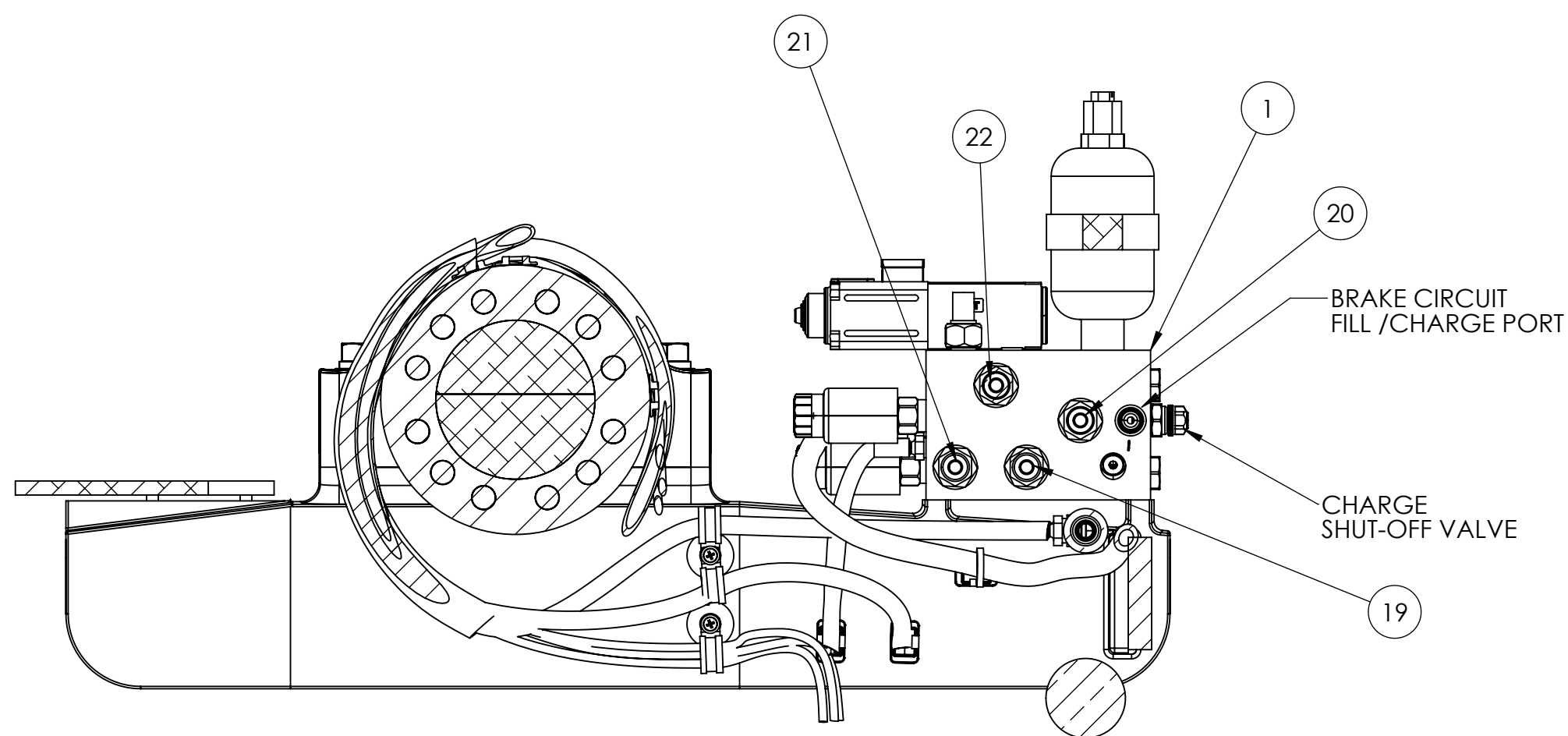
SIZE <b>C</b>	DWG. NO. <b>90004</b>	REV <b>2</b>
SCALE: 1:10	WEIGHT:	SHEET 2



**SECTION B-B  
VIEW OF INBOARD FACE OF BRAKE SADDLE**



**LIFTING POINT HARDWARE  
2 PLACES  
(SHIPS LOOSE WITH GYRO ASSEMBLY)**



**SECTION C-C  
VIEW OF INBOARD FACE OF SADDLE**

SIZE <b>C</b>	DWG. NO. <b>90004</b>	REV <b>2</b>
SCALE: 1:10	WEIGHT:	SHEET 2